



INCIDENT COMMAND SYSTEM

Hazardous Materials

LESSON PLAN 6
HAZARDOUS
MATERIALS SITE
ACCESS CONTROL
LEADER

TOPIC: HAZARDOUS MATERIALS SITE ACCESS CONTROL
LEADER

TIME FRAME: 15 Minutes

LEVEL OF INSTRUCTION: Level I

BEHAVIORAL OBJECTIVE:

Condition: A written test.

Behavior: The student will answer all questions.

Standard: With 80% accuracy according to the information in the Incident Command System Hazardous Materials Module Hazardous Materials Site Access Control Leader Position Manual (ICS 222-4), pages 1 - 6.

MATERIALS NEEDED: Chalkboard, chalk, and eraser, view graph 06-01-I-HM-120-1-VG, overhead projector and screen.

REFERENCES: ICS-HM-222-4, Incident Command System Hazardous Materials Module Hazardous Materials Site Access Control Leader Position Manual.

PREPARATION: The Hazardous Materials Site Access Control Leader is responsible for having a thorough working knowledge of the duties and responsibilities of the position as listed in the Hazardous Materials Site Access Control Leader Position Manual (ICS-HM-222-4). The Site Access Control Leader is one of the functional management positions of the Hazardous Materials Module. The Site Access Control Leader reports directly to the Hazardous Materials Group Supervisor. In filling this position you will supervise all movement of personnel and equipment within the control zones during all operations within the hazard site.

You will be given a written quiz at the end of this lesson. The performance standard for this quiz will be 80% correct.



INCIDENT COMMAND SYSTEM

Hazardous Materials

LESSON PLAN 6
HAZARDOUS
MATERIALS SITE
ACCESS CONTROL
LEADER

PRESENTATION	APPLICATION
<p>I. ORGANIZATION</p> <ul style="list-style-type: none">A. Site Access Control Leader assigned to<ul style="list-style-type: none">1. HM groupB. Reports to<ul style="list-style-type: none">1. HM Group SupervisorC. Responsible for<ul style="list-style-type: none">1. Control of movement<ul style="list-style-type: none">a. Within control zones2. Proper use of access routes <p>II. PERSONNEL</p> <ul style="list-style-type: none">A. General objectives of this position<ul style="list-style-type: none">1. Control movement of all personnel<ul style="list-style-type: none">a. Within the zones2. Use of access control points and routesB. HM Site Access Control Leader requirements<ul style="list-style-type: none">1. Minimum equivalent to<ul style="list-style-type: none">a. Federal, state, and local laws	<p>Show 06-01-I-HM-120-1-VG</p> <p>The Site Access Control Leader reports to whom?</p> <p>What are the general objectives of the Hazardous Materials Site Access Control Leader?</p> <p>What requirements for the position of Site Access Control leader?</p>



INCIDENT COMMAND SYSTEM

Hazardous Materials

LESSON PLAN 6
HAZARDOUS
MATERIALS SITE
ACCESS CONTROL
LEADER

PRESENTATION	APPLICATION
<p>III. MAJOR RESPONSIBILITIES AND PROCEDURES</p> <p>A. Check-in and obtain briefing</p> <ol style="list-style-type: none">1. Complete Check-in list<ol style="list-style-type: none">a. ICS Form 2112. If reporting directly to assignment<ol style="list-style-type: none">a. Check-in via radio3. Request briefing which includes<ol style="list-style-type: none">a. Incident Briefing (ICS Form 201)b. Or the information verballyc. Request instructions concerning work activities4. Obtain Incident Action Plan (IAP)5. Start Unit/Activity Log<ol style="list-style-type: none">a. ICS Form 214 <p>B. Organize to control access to the hazard site</p> <ol style="list-style-type: none">1. Compile a site diagram (site map)<ol style="list-style-type: none">a. IAP attachment2. Develop and execute site security measures (Site Safety and Control Plan ICS Form 208 HM)<ol style="list-style-type: none">a. IAP attachment3. Use well defined physical barriers4. Brief your assigned personnel	<p>What are the check-in procedures?</p> <p>What form will the HM Site Access Control Leader use to keep track of unit activities?</p> <p>What are the planning requirements of the HM Site Access Control Leader?</p>



INCIDENT COMMAND SYSTEM

Hazardous Materials

LESSON PLAN 6
HAZARDOUS
MATERIALS SITE
ACCESS CONTROL
LEADER

PRESENTATION	APPLICATION
<ul style="list-style-type: none">• Use ICS Form 214• Medical monitoring• Health Care destination	
<p>H. Coordinate with the Medical Group</p> <ol style="list-style-type: none">1. Separate contaminated individuals2. Maintain records of exposed incident response personnel<ol style="list-style-type: none">a. Written documentation	<p>What are the factors that must be considered when coordinating with the Medical Group?</p>
<p>I. Observe climatic changes and conditions external to the hazard site</p> <ol style="list-style-type: none">1. Observe personally or use assistants2. Recommend needed adjustments in control lines	
<p>J. Coordinate with the Entry Leader</p> <ol style="list-style-type: none">1. Number of entry personnel2. Estimated time of exit from Exclusion Zone	<p>When coordinating with the Entry Leader what are the common concerns?</p>
<p>K. Coordinate with the Decon Leader</p>	
<p>L. Maintain Unit/Activity Log</p> <ol style="list-style-type: none">1. ICS Form 2142. Significant events3. Submit to HM Group Supervisor<ol style="list-style-type: none">a. At the end of each operational period	<p>The Unit/Activity Log is submitted to whom?</p>



INCIDENT COMMAND SYSTEM

Hazardous Materials

LESSON PLAN 6
HAZARDOUS
MATERIALS SITE
ACCESS CONTROL
LEADER

SUMMARY:

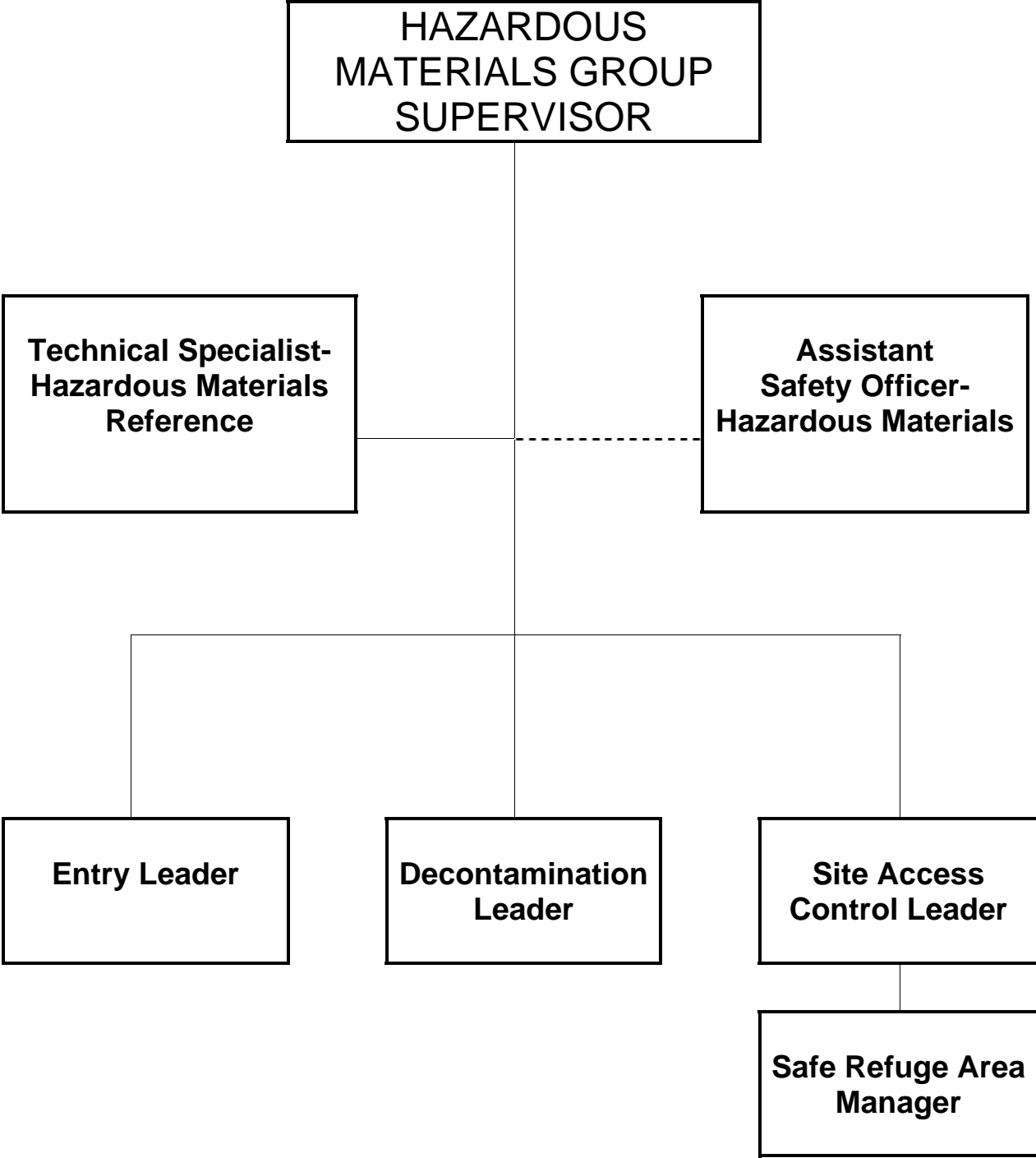
We have taken a detailed look at the duties of the Hazardous Materials Site Access Control Leader. When filling this position you are responsible for the control and movement of all personnel and equipment through appropriate access routes into and from the control zones. Your reason for controlling movement is to ensure that the spread of contaminants is controlled. Your position is very important and requires close coordination and communication with many other aspects of the Hazardous Materials Group. Stay alert and stay in touch with other members of the group. In addition, be aware of the surroundings and any element which may require alteration of control lines.

EVALUATION:

Give student quiz I-HM-222-4

ASSIGNMENT:

Read pages 1 - 6 of Hazardous Materials Site Access Control Leader Position Manual (ICS-HM-222-4)



Incident Command System Hazardous Materials Module
I-HM-222-4 Quiz

NAME: _____ DATE: _____

Hazardous Materials Site Access Control Leader

INSTRUCTIONS: This is a multiple-choice quiz. For each of the following questions or statements, mark the letter preceding the one best answer.

EXAMPLE: Methods and operating procedures which reduce fire, water, and smoke damage during and after a fire are called:

- A. Overhaul
- B. Ventilation
- C. Extinguishment
- D. Salvage**

1. The Hazardous Materials Site Access Control Leader is assigned to the:
 - A. Incident Commander
 - B. Operations Section Plans Section
 - C. Plans Section
 - D. Haz Mat Group

2. Which of the duties listed below is the responsibility of the Site Access Control Leader:
 - A. All activities in the Exclusion Zone
 - B. The control of the movement of all people and equipment through access routes at the hazard site
 - C. Developing a flow plan of personnel through the CRC
 - D. Overall scene safety

3. During the incident, when should the Site Access Control leader be identified:
 - A. Late in the incident
 - B. As entry into the Exclusion Zone is being made
 - C. Early in the incident
 - D. During the demobilization phase

4. From whom does the Site Access Control Leader obtain recommendations on the control line placement?
 - A. ASO - HM, Tech Spec - HM Reference, and Entry Leader
 - B. Decon Leader, Entry Leader, and ASO - HM
 - C. Entry Leader, Decon Leader, and Tech Spec - HM Reference
 - D. HM Group Supervisor, Entry Leader, and Decon Leader

5. With whom does the Site Access Control Leader track incident personnel that have passed through the contamination control lines?
 - A. Medical Group Supervisor
 - B. Medical Unit Leader
 - C. USAR Task Force Leader
 - D. ASO -HM

6. Who is in charge of the Safe Refuge Area?
 - A. Medical Group Supervisor
 - B. Logistics Section Chief
 - C. Safe Refuge Area Manager
 - D. None of the above

7. Factors to consider when coordinating with the Medical Group include:
 - A. Tracking incident personnel
 - B. Who reports to the Medical Group Leader
 - C. Keeping contaminated individuals separated from non-contaminated
 - D. A and C

8. Where is the Safe Refuge Area established?
 - A. The Exclusion Zone
 - B. The Contamination Reduction Zone
 - C. The Support Zone
 - D. The Incident Command Post

9. Maintaining observations of climatic conditions is a responsibility of the Site Access Control Leader. The main reason for this requirement is:
 - A. To plan for long term cleanup of the hazard site
 - B. To prepare for transfer of the hazard site to the property owner
 - C. To prepare for needed adjustments in the location of control lines
 - D. All of the above

10. The ICS Form 214 should include significant events and be submitted at the end of each operational period to the:
 - A. Incident Commander
 - B. HM Group Supervisor
 - C. Entry Leader
 - D. Safe Refuge Area Manager

Incident Command System Hazardous Materials Module
I-HM-222-4 Keyed Quiz

NAME: _____ DATE: _____

Hazardous Materials Site Access Control Leader

INSTRUCTIONS: This is a multiple-choice quiz. For each of the following questions or statements, mark the letter preceding the one best answer.

EXAMPLE: Methods and operating procedures which reduce fire, water, and smoke damage during and after a fire are called:

- A. Overhaul
- B. Ventilation
- C. Extinguishment
- D. Salvage**

1. The Hazardous Materials Site Access Control Leader is assigned to the:
 - A. Incident Commander
 - B. Operations Section Plans Section
 - C. Plans Section
 - D. Haz Mat Group**

2. Which of the duties listed below is the responsibility of the Site Access Control Leader:
 - A. All activities in the Exclusion Zone
 - B. The control of the movement of all people and equipment through access routes at the hazard site**
 - C. Developing a flow plan of personnel through the CRC
 - D. Overall scene safety

3. During the incident, when should the Site Access Control leader be identified:
 - A. Late in the incident
 - B. As entry into the Exclusion Zone is being made
 - C. Early in the incident**
 - D. During the demobilization phase

4. From whom does the Site Access Control Leader obtain recommendations on the control line placement?
 - A. ASO - HM, Tech Spec - HM Reference, and Entry Leader
 - B. Decon Leader, Entry Leader, and ASO - HM
 - C. Entry Leader, Decon Leader, and Tech Spec - HM Reference**
 - D. HM Group Supervisor, Entry Leader, and Decon Leader

5. With whom does the Site Access Control Leader track incident personnel that have passed through the contamination control lines?
- A. Medical Group Supervisor
 - B. Medical Unit Leader**
 - C. USAR Task Force Leader
 - D. ASO -HM
6. Who is in charge of the Safe Refuge Area?
- A. Medical Group Supervisor
 - B. Logistics Section Chief
 - C. Safe Refuge Area Manager**
 - D. None of the above
7. Factors to consider when coordinating with the Medical Group include:
- A. Tracking incident personnel
 - B. Who reports to the Medical Group Leader
 - C. Keeping contaminated individuals separated from non-contaminated**
 - D. A and C
8. Where is the Safe Refuge Area established?
- A. The Exclusion Zone
 - B. The Contamination Reduction Zone**
 - C. The Support Zone
 - D. The Incident Command Post
9. Maintaining observations of climatic conditions is a responsibility of the Site Access Control Leader. The main reason for this requirement is:
- A. To plan for long term cleanup of the hazard site
 - B. To prepare for transfer of the hazard site to the property owner
 - C. To prepare for needed adjustments in the location of control lines**
 - D. All of the above
10. The ICS Form 214 should include significant events and be submitted at the end of each operational period to the:
- A. Incident Commander
 - B. HM Group Supervisor**
 - C. Entry Leader
 - D. Safe Refuge Area Manager