



INCIDENT COMMAND SYSTEM

Hazardous Materials

LESSON PLAN 8
HAZARDOUS
MATERIALS TECHNICAL
SPECIALIST –
HAZARDOUS MATERIALS
REFERENCE

TOPIC: TECHNICAL SPECIALIST – HAZARDOUS MATERIALS
REFERENCE

TIME FRAME: 15 Minutes

LEVEL OF INSTRUCTION: Level I

BEHAVIORAL OBJECTIVE:

Condition: A written test.

Behavior: The student will answer all questions.

Standard: With 80% accuracy according to the information in the Incident Command System Hazardous Materials Module Technical Specialist - Hazardous Materials Reference Position Manual (ICS-HM-222-6), Pages 1 - 7.

MATERIALS NEEDED: Chalkboard, chalk, and eraser, view graph 08-01-I-HM-120-1-VG, overhead projector and screen.

REFERENCES: ICS-HM-222-6, Incident Command System Hazardous Materials Module Technical Specialist - Hazardous Materials Reference Position Manual.

PREPARATION: The Technical Specialist - Hazardous Materials Reference is responsible for having a thorough knowledge of the duties and responsibilities of the position as listed in the Technical Specialist - Hazardous Materials Reference Position Manual (ICS-HM-222-6). You will report to the Incident Planning Section Chief but normally you will work with the Hazardous Materials Group Supervisor. You will use available information to develop intelligence for both the Hazardous Materials Group and for the Planning Section. You will utilize a variety of information sources and make contact with people and agencies on-site and remote from the hazard site.

You will be given a written quiz at the end of this lesson. The performance standard for this quiz will be 80% correct.



INCIDENT COMMAND SYSTEM

Hazardous Materials

PRESENTATION	APPLICATION
<p>I. ORGANIZATION</p> <p>A. Tech Spec - HM Reference reports to HM Group Supervisor</p> <p>B. Assigned to</p> <ol style="list-style-type: none"> 1. HM Group Supervisor 2. Per operational period <p>C. Responsible for providing</p> <ol style="list-style-type: none"> 1. Technical information from <ol style="list-style-type: none"> a. Computer databases b. Reference manuals c. Information agencies d. Facility representative e. Product specialists 2. Information to HM Group 3. Product identification <ol style="list-style-type: none"> a. Verification b. Physical properties c. Hazard characteristics <p>II. PERSONNEL</p> <p>A. General objectives of this position</p> <ol style="list-style-type: none"> 1. Provides IC with: <ol style="list-style-type: none"> a. Product identification b. Hazard assessment c. Environmental impact 	<p>Show 08-01-I-HM-120-1-VG</p> <p>In the ICS organization where is the Tech Spec - HM Reference assigned?</p> <p>What are some of the Tech Spec - HM References responsibilities?</p> <p>What other information does the Tech Spec - HM Reference provide?</p>



INCIDENT COMMAND SYSTEM

Hazardous Materials

PRESENTATION	APPLICATION
<ul style="list-style-type: none"> B. Tech Spec - HM Reference requirements <ul style="list-style-type: none"> 1. Minimum equivalent to <ul style="list-style-type: none"> a. Federal, state, and local laws 	<p>Describe the requirements of the Tech Spec - HM Reference position.</p>
<p>III. MAJOR RESPONSIBILITIES AND PROCEDURES</p>	
<ul style="list-style-type: none"> A. Check-in and obtain briefing from Planning Section Chief <ul style="list-style-type: none"> 1. Complete Check-in List <ul style="list-style-type: none"> a. ICS Form 211 2. If reporting directly to assignment <ul style="list-style-type: none"> a. Check-in via radio 3. Request briefing which includes <ul style="list-style-type: none"> a. Incident Briefing (ICS Form 201) b. Or the information verbally c. Request instructions concerning work activities 4. Obtain Incident Action Plan 5. Provide Planning Section with technical information and assistance 6. Start Unit/Activity Log <ul style="list-style-type: none"> a. ICS Form 214 	<p>What are the check-in procedures?</p>
<ul style="list-style-type: none"> B. Obtain briefing from HM Group Supervisor <ul style="list-style-type: none"> 1. Objectives for operational period 2. Requests for next operational period 3. Summary of reference sources 4. Instructions 5. Determine additional resource needs 	<p>What official form will the Tech Spec - HM Reference record unit activities?</p> <p>What information would be included in the briefing for the person filling this position?</p>



INCIDENT COMMAND SYSTEM

Hazardous Materials

LESSON PLAN 8
 HAZARDOUS
 MATERIALS TECHNICAL
 SPECIALIST –
 HAZARDOUS MATERIALS
 REFERENCE

PRESENTATION	APPLICATION
5. Product identification a. Information to incident personnel	
G. Determine PPE compatibility to hazardous material 1. Analyze and recommend PPE selection to Hazardous Materials Group Supervisor, ASO HM and Entry Leader	What assistance would this position provide to the Entry Leader?
H. Incident documentation 1. Obtain duplication equipment 2. Provide for photo and video 3. Forward to Documentation Unit 4. Interpret data for Information Officer	Would this position require specialized documentation equipment?
I. Provide information management, public, and private agencies 1. Poison control centers 2. Tox centers 3. CHEMTREC 4. Manufacturer, shipper 5. National Response Center a. Request through incident communication center 6. If additional Technical Specialists are needed a. Request through HM Group	What other considerations would the Tech Spec - HM Reference have when gathering information?
J. Assist Planning Section 1. Assess environmental impact a. Request Environmental Specialist	Who else would the Tech Spec - HM Reference support?



INCIDENT COMMAND SYSTEM

Hazardous Materials

LESSON PLAN 8
HAZARDOUS
MATERIALS TECHNICAL
SPECIALIST –
HAZARDOUS MATERIALS
REFERENCE

PRESENTATION	APPLICATION
<ul style="list-style-type: none">2. Forecast spread, if release is continuing<ul style="list-style-type: none">a. Computer modeling<ul style="list-style-type: none">b. Assist with public protection decisions K. Maintain Unit/Activities Log<ul style="list-style-type: none">1. ICS Form 2142. Significant events3. Submit to HM Group Supervisor<ul style="list-style-type: none">a. At the end of operational period	<p>The Unit/Activities Log submitted to whom?</p>



INCIDENT COMMAND SYSTEM

Hazardous Materials

LESSON PLAN 8
HAZARDOUS
MATERIALS TECHNICAL
SPECIALIST –
HAZARDOUS MATERIALS
REFERENCE

SUMMARY:

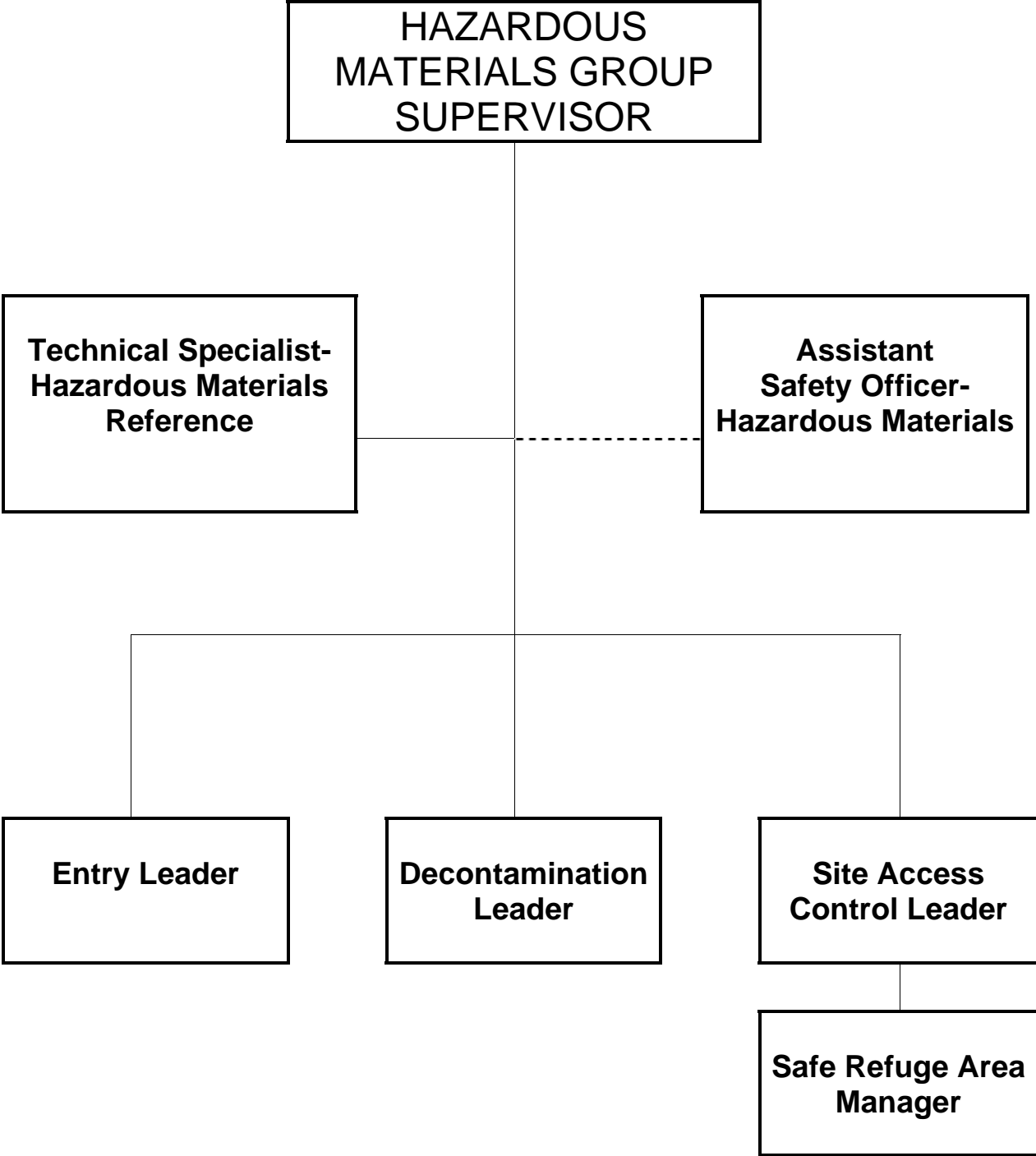
We have taken a detailed look at the duties of the Technical Specialist - Hazardous Materials Reference. It is important to remember when filling this position to coordinate with both the Hazardous Materials Group Supervisor and the Planning Section Chief. You will also be required to coordinate with the Entry Leader, the Decontamination Leader, the Site Access Control Leader, and the Assistant Safety Officer - Hazardous Materials. The responsibilities of your position include evaluating and analyzing samples, data, and information collected on the incident. You will assist with determining the hazard to responders, the public and the environment.

EVALUATION:

Give student quiz I-HM-222-6

ASSIGNMENT:

Read pages 1 - 7 of Technical Specialist - Hazardous Materials Reference Position Manual (ICS-HM-222-6)



Incident Command System Hazardous Materials Module
I-HM-222-6 Quiz

NAME: _____ DATE: _____

Technical Specialist - Hazardous Materials Reference

INSTRUCTIONS: This is a multiple-choice quiz. For each of the following questions or statements, mark the letter preceding the one best answer.

EXAMPLE: Methods and operating procedures which reduce fire, water, and smoke damage during and after a fire are called:

- A. Overhaul
- B. Ventilation
- C. Extinguishment
- D. Salvage**

1. The Technical Specialist - Hazardous Materials Reference (Tech Spec -HM Reference) reports to:
 - A. The Incident Commander
 - B. The Operations Section Chief
 - C. The Hazardous Materials Group Supervisor
 - D. The Logistics Section Chief

2. The Tech Spec - HM Reference is assigned to the:
 - A. The Entry Team Leader
 - B. The "T" Card monitor
 - C. The Haz Mat Group
 - D. The overall scene commander

3. General responsibilities of the Tech Spec - HM Reference includes providing technical information obtained from all of the following except:
 - A. Product specialist
 - B. Reference manuals
 - C. Computer databases
 - D. Media releases

4. To whom does the Tech Spec -HM Reference recommend the location of control lines:
 - A. Site Access Control Leader
 - B. Entry Leader
 - C. Hazardous Materials Group Supervisor
 - D. Decon Leader

5. The general objectives of the Tech Spec - HM Reference include providing the IC:
 - A. Expertise in identifying and assessing hazards
 - B. Measuring operational benefits
 - C. Environmental impact projections
 - D. All of the above

6. The Tech Spec - HM Reference will assist the _____ Section with projecting the potential environmental effects of the release or threatened release:
 - A. Operations
 - B. Plans
 - C. Logistics
 - D. Finance

7. The Tech Spec - HM reference provides support to the HM Group Supervisor by:
 - A. Interfacing with facility representatives
 - B. Assisting ASO - HM with safety information
 - C. Analyzing the effectiveness of decon
 - D. All of the above

8. Other information management agencies that the Tech Spec - HM Reference might gather information from would include:
 - A. Poison Control Center
 - B. Tox Center
 - C. CHEMTREC
 - D. All the above

9. To whom does the Tech Spec - HM Reference make PPE recommendations?
 - A. HM Group Supervisor, ASO - HM, and IC
 - B. ASO - HM, HM Group Supervisor, and Entry Leader
 - C. Safety Officer, HM Group Supervisor, and HM Branch Director
 - D. HM Group Supervisor, ASO - HM, and Safety Officer

10. What ICS form must the Tech Spec - HM Reference maintain at a minimum?
 - A. ICS Form 211
 - B. ICS Form 214
 - C. ICS Form 202
 - D. ICS Form 299

Incident Command System Hazardous Materials Module
I-HM-222-6 Keyed Quiz

NAME: _____ DATE: _____

Technical Specialist - Hazardous Materials Reference

INSTRUCTIONS: This is a multiple-choice quiz. For each of the following questions or statements, mark the letter preceding the one best answer.

EXAMPLE: Methods and operating procedures which reduce fire, water, and smoke damage during and after a fire are called:

- A. Overhaul
- B. Ventilation
- C. Extinguishment
- D. Salvage**

1. The Technical Specialist - Hazardous Materials Reference (Tech Spec -HM Reference) reports to:
 - A. The Incident Commander
 - B. The Operations Section Chief
 - C. The Hazardous Materials Group Supervisor**
 - D. The Logistics Section Chief

2. The Tech Spec - HM Reference is assigned to the:
 - A. The Entry Team Leader
 - B. The "T" Card monitor
 - C. The Haz Mat Group**
 - D. The overall scene commander

3. General responsibilities of the Tech Spec - HM Reference includes providing technical information obtained from all of the following except:
 - A. Product specialist
 - B. Reference manuals
 - C. Computer databases
 - D. Media releases**

4. To whom does the Tech Spec -HM Reference recommend the location of control lines:
 - A. Site Access Control Leader
 - B. Entry Leader
 - C. Hazardous Materials Group Supervisor**
 - D. Decon Leader

5. The general objectives of the Tech Spec - HM Reference include providing the IC:
- A. Expertise in identifying and assessing hazards
 - B. Measuring operational benefits
 - C. Environmental impact projections
 - D. All of the above**
6. The Tech Spec - HM Reference will assist the _____ Section with projecting the potential environmental effects of the release or threatened release:
- A. Operations
 - B. Plans**
 - C. Logistics
 - D. Finance
7. The Tech Spec - HM reference provides support to the HM Group Supervisor by:
- A. Interfacing with facility representatives
 - B. Assisting ASO - HM with safety information
 - C. Analyzing the effectiveness of decon
 - D. All of the above**
8. Other information management agencies that the Tech Spec - HM Reference might gather information from would include:
- A. Poison Control Center
 - B. Tox Center
 - C. CHEMTREC
 - D. All the above**
9. To whom does the Tech Spec - HM Reference make PPE recommendations?
- A. HM Group Supervisor, ASO - HM, and IC
 - B. ASO - HM, HM Group Supervisor, and Entry Leader**
 - C. Safety Officer, HM Group Supervisor, and HM Branch Director
 - D. HM Group Supervisor, ASO - HM, and Safety Officer
10. What ICS form must the Tech Spec - HM Reference maintain at a minimum?
- A. ICS Form 211
 - B. ICS Form 214**
 - C. ICS Form 202
 - D. ICS Form 299