



INCIDENT COMMAND SYSTEM

Hazardous Materials

LESSON PLAN 9
HAZARDOUS
MATERIALS SAFE
REFUGE AREA
MANAGER

TOPIC: HAZARDOUS MATERIALS SAFE REFUGE AREA
MANAGER

TIME FRAME: 15 Minutes

LEVEL OF INSTRUCTION: Level I

BEHAVIORAL OBJECTIVE:

Condition: A written test.

Behavior: The student will answer all questions.

Standard: With 80% accuracy according to the information in the Incident Command System Hazardous Materials Module Hazardous Materials Safe Refuge Area Manager Position Manual (ICS-HM-222-7), Pages 1 - 6.

MATERIALS NEEDED: Chalkboard, chalk, and eraser, view graph 09-01-I-HM-120-1-VG, overhead projector and screen.

REFERENCES: ICS-HM-222-7, Incident Command System Hazardous Materials Module Hazardous Materials Safe Refuge Area Manager Position Manual (ICS-HM-222-7).

PREPARATION: The Hazardous Materials Safe Refuge Area Manager must have a thorough working knowledge of the duties and responsibilities of the position. You will report to the Site Access Control Leader. There may already be victims identified as having been contaminated or needing to be interviewed to determine if they have information about the emergency situation. Your job is to manage the Safe Refuge Area; to triage and interview the victims that are being transferred to you.

You will be given a written quiz at the end of this lesson. The performance standard for this quiz will be 80% correct.



INCIDENT COMMAND SYSTEM

Hazardous Materials

LESSON PLAN 9
HAZARDOUS
MATERIALS SAFE
REFUGE AREA
MANAGER

PRESENTATION	APPLICATION
<p>I. ORGANIZATION</p> <ul style="list-style-type: none">A. Safe Refuge Area Manager assigned to<ul style="list-style-type: none">1. Site Access Control LeaderB. Reports to<ul style="list-style-type: none">1. Site Access Control LeaderC. Coordinates with<ul style="list-style-type: none">1. Decontamination Leader2. Entry LeaderD. Operates near the Safe Refuge Area<ul style="list-style-type: none">1. Safe Refuge Area is located<ul style="list-style-type: none">a. In the CRZ near the CRC2. Comply with PPE requirements<ul style="list-style-type: none">a. If entry into CRZE. Site Access Control component <p>II. PERSONNEL</p> <ul style="list-style-type: none">A. General objectives of this position<ul style="list-style-type: none">1. Prevent spread of contamination<ul style="list-style-type: none">a. From victims2. Prioritize victims for treatment3. Collect information from victims	<p>Show 09-01-I-HM-120-1-VG</p> <p>In the ICS organization the Safe Refuge Area Manager assigned to?</p> <p>Where does the Safe Refuge Area Manager operate?</p>



INCIDENT COMMAND SYSTEM

Hazardous Materials

LESSON PLAN 9
HAZARDOUS
MATERIALS SAFE
REFUGE AREA
MANAGER

PRESENTATION	APPLICATION
<ul style="list-style-type: none">C. Safe Refuge Area Manager requirements<ul style="list-style-type: none">1. Minimum equivalent to<ul style="list-style-type: none">a. Federal, state, and local laws	Describe the requirements of the Safe Refuge Area Manager position.
<p>III. MAJOR RESPONSIBILITIES AND PROCEDURES</p>	
<ul style="list-style-type: none">A. Check-in and obtain briefing from the Site Access Control Leader<ul style="list-style-type: none">1. Complete Check-in List<ul style="list-style-type: none">a. ICS Form 2112. If reporting directly to assignment<ul style="list-style-type: none">a. Check-in via radio3. Request briefing which includes<ul style="list-style-type: none">a. Incident Briefing (ICS Form 201)b. Or the information verballyc. Request instructions concerning work activities4. Obtain Incident Action Plan5. Start Unit/Activity Log<ul style="list-style-type: none">a. ICS Form 214B. Establish the Safe Refuge Area<ul style="list-style-type: none">1. Coordinate with the Decon Leader2. Coordinate with the Entry Leader3. Determine resource needs<ul style="list-style-type: none">a. Request through Site Access Control Leader4. Post Safe Refuge Area for identification	What are the check-in procedures for the Safe Refuge Area Manager?



INCIDENT COMMAND SYSTEM

Hazardous Materials

PRESENTATION	APPLICATION
<p>C. Monitor hazardous material release</p> <ol style="list-style-type: none"> 1. Communicate with ASO - HM <p>D. Assist Site Access Control Leader</p> <ol style="list-style-type: none"> 1. Evaluate victims for primary decon <p>E. Manage the Safe Refuge Area</p> <ol style="list-style-type: none"> 1. Evaluate victims for secondary contamination 2. Coordinate with Decon Leader <ol style="list-style-type: none"> a. For decon priority 3. Collect civilian witness information <ol style="list-style-type: none"> a. Use ICS Form 214 b. Relay information to HM Group Supervisor <ul style="list-style-type: none"> • Through Site Access Control Leader <p>F. Communicate with the Entry Leader</p> <ol style="list-style-type: none"> 1. Coordinate movement of victims from <ol style="list-style-type: none"> a. Exclusion Zone b. Request EMS triage <ul style="list-style-type: none"> • Medical condition • Degree of contamination <p>G. Communicate with the Decon Leader</p> <ol style="list-style-type: none"> 1. Coordinate movement of victims from the Safe Refuge Area to the CRC <ol style="list-style-type: none"> a. Needing immediate decon 	<p>What will you do with the information that is given to you from the victims?</p> <p>How can you control the movement of injured persons?</p> <p>How could you avoid the possible overloading of the CRC?</p>



INCIDENT COMMAND SYSTEM

Hazardous Materials

LESSON PLAN 9
HAZARDOUS
MATERIALS SAFE
REFUGE AREA
MANAGER

PRESENTATION	APPLICATION
<ul style="list-style-type: none">H. Maintain Unit/Activity Log<ul style="list-style-type: none">1. ICS Form 2142. Record events and actions3. Submit to Site Access Control Leader<ul style="list-style-type: none">a. At end of operational period	



INCIDENT COMMAND SYSTEM

Hazardous Materials

LESSON PLAN 9
HAZARDOUS
MATERIALS SAFE
REFUGE AREA
MANAGER

SUMMARY:

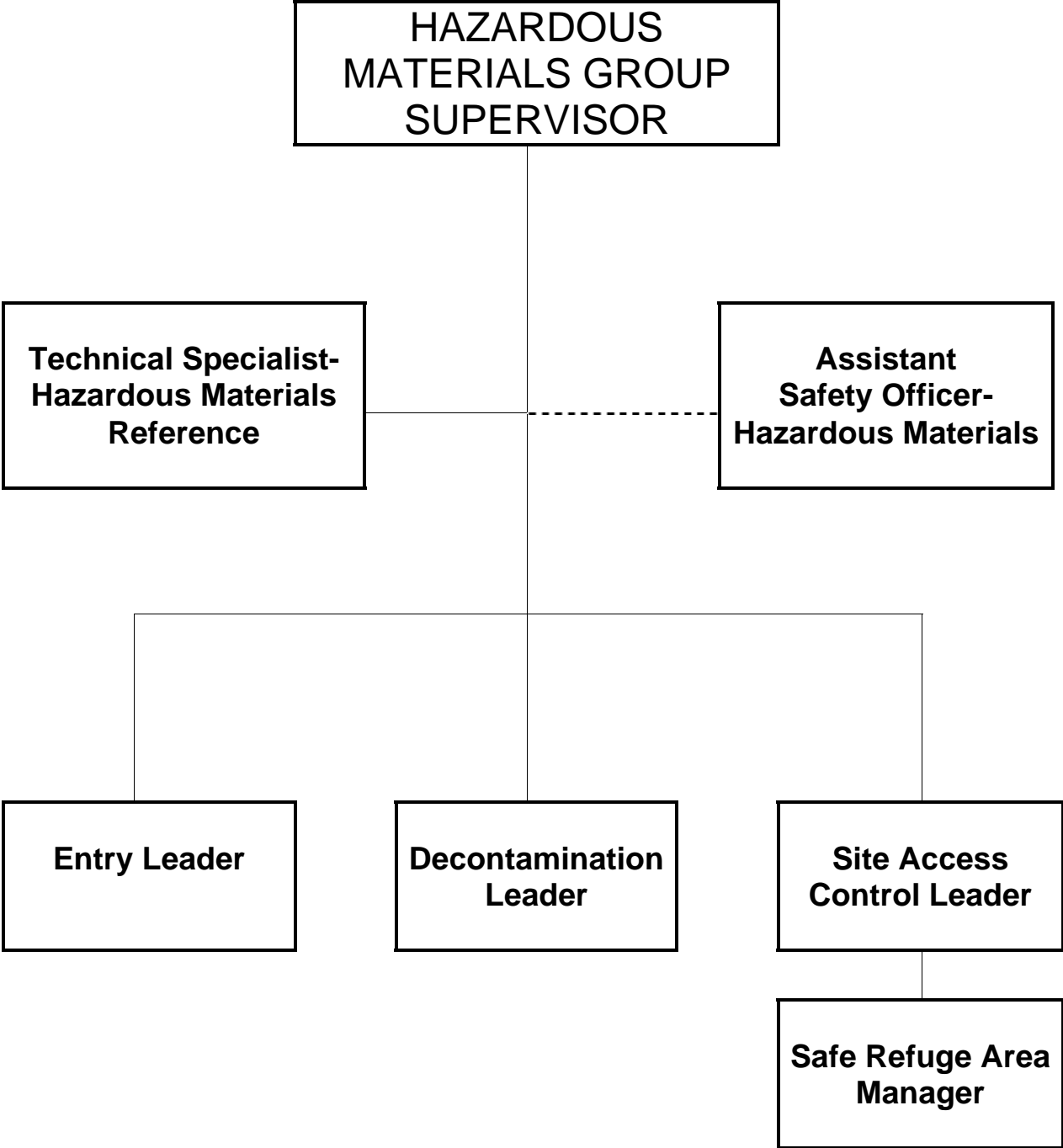
The position description and checklist just covered is the minimum consideration for the position of Hazardous Materials Safe Refuge Area Manager. The most important one is to establish communications and coordination with the various leader positions that you will be interfacing. The evaluation of victims (triaging) and the gathering of information from the victims is very important to this position.

EVALUATION:

Give student quiz I-HM-222-7

ASSIGNMENT:

Read pages 1 - 6 of Hazardous Materials Safe Refuge Area Manager Position Manual (ICS-HM-222-7)



Incident Command System Hazardous Materials Module
I-HM-222-7 Quiz

NAME: _____ DATE: _____

Hazardous Materials Safe Refuge Area Manager

INSTRUCTIONS: This is a multiple-choice quiz. For each of the following questions or statements, mark the letter preceding the one best answer.

EXAMPLE: Methods and operating procedures which reduce fire, water, and smoke damage during and after a fire are called:

- A. Overhaul
- B. Ventilation
- C. Extinguishment
- D. Salvage**

1. The Safe Refuge Area Manager reports to the:

- A. The Site Access Control Leader
- B. Operations Section Chief
- C. Planning Section Chief
- D. HM Group Supervisor

2. The Safe Refuge Area Manager is assigned to the:

- A. Entry Leader
- B. The Decon Leader
- C. Hazardous Materials Group
- D. The Incident Commander

3. Where is the Safe Refuge Area located:

- A. Exclusion Zone
- B. The Support Zone
- C. Contamination Reduction Zone
- D. The Tepid Zone

4. The general objectives of the Safe Refuge Area Manager position includes all the following except:

- A. Documenting the decon teams "on air time"
- B. Preventing spread of contamination from victims
- C. Prioritizing victims for treatment
- D. Collecting information from victims

5. The Safe Refuge Area Manager must coordinate activities with:
 - A. The Decon Leader
 - B. The Entry Leader
 - C. The Site Access Control Leader
 - D. All of the above

6. Refuge Area Manager will request additional resources through:
 - A. The Site Access Control Leader
 - B. The State Warning Control Center
 - C. The Logistics Section Chief
 - D. The Planning Section Chief

7. The Safe Refuge Area Manager should relay pertinent information received from victims through the Site Access Control Leader to the:
 - A. Incident Commander
 - B. Planning Section Chief
 - C. Local Media for immediate broadcast
 - D. HM Group Supervisor

8. By what criteria will the Entry Team(s) triage victims:
 - A. Age and gender
 - B. Training and education
 - C. Medical condition and degree of contamination
 - D. All the Above

9. If there is a need for the Safe Refuge Area Manager to enter the Contamination Reduction Zone in order to fulfill his responsibilities what level of PPE shall be worn:
 - A. The appropriate level
 - B. Level A
 - C. Level B
 - D. Level C

10. Which ICS form must be maintained by the Safe Refuge Area Manager?
 - A. ICS Form 211
 - B. ICS Form 214
 - C. ICS Form 202
 - D. ICS Form 299

Incident Command System Hazardous Materials Module
I-HM-222-7 Keyed Quiz

NAME: _____ DATE: _____

Hazardous Materials Safe Refuge Area Manager

INSTRUCTIONS: This is a multiple-choice quiz. For each of the following questions or statements, mark the letter preceding the one best answer.

EXAMPLE: Methods and operating procedures which reduce fire, water, and smoke damage during and after a fire are called:

- A. Overhaul
- B. Ventilation
- C. Extinguishment
- D. Salvage**

1. The Safe Refuge Area Manager reports to the:

- A. The Site Access Control Leader**
- B. Operations Section Chief
- C. Planning Section Chief
- D. HM Group Supervisor

2. The Safe Refuge Area Manager is assigned to the:

- A. Entry Leader
- B. The Decon Leader
- C. Hazardous Materials Group**
- D. The Incident Commander

3. Where is the Safe Refuge Area located:

- A. Exclusion Zone
- B. The Support Zone
- C. Contamination Reduction Zone**
- D. The Tepid Zone

4. The general objectives of the Safe Refuge Area Manager position includes all the following except:

- A. Documenting the decon teams "on air time"**
- B. Preventing spread of contamination from victims
- C. Prioritizing victims for treatment
- D. Collecting information from victims

5. The Safe Refuge Area Manager must coordinate activities with:
- A. The Decon Leader
 - B. The Entry Leader
 - C. The Site Access Control Leader
 - D. All of the above**
6. Refuge Area Manager will request additional resources through:
- A. The Site Access Control Leader**
 - B. The State Warning Control Center
 - C. The Logistics Section Chief
 - D. The Planning Section Chief
7. The Safe Refuge Area Manager should relay pertinent information received from victims through the Site Access Control Leader to the:
- A. Incident Commander
 - B. Planning Section Chief
 - C. Local Media for immediate broadcast
 - D. HM Group Supervisor**
8. By what criteria will the Entry Team(s) triage victims:
- A. Age and gender
 - B. Training and education
 - C. Medical condition and degree of contamination**
 - D. All the Above
9. If there is a need for the Safe Refuge Area Manager to enter the Contamination Reduction Zone in order to fulfill his responsibilities what level of PPE shall be worn:
- A. The appropriate level**
 - B. Level A
 - C. Level B
 - D. Level C
10. Which ICS form must be maintained by the Safe Refuge Area Manager?
- A. ICS Form 211
 - B. ICS Form 214**
 - C. ICS Form 202
 - D. ICS Form 299